

Thank you for purchasing this Dynojet kit. This kit has been developed for a motorcycle which is set to the parameters listed at the right in the "Stage" description. If your motorcycle does not meet any of these parameters please check with Dynojet before installation. For technical assistance contact your Dynojet distributor or call Dynojet U.S.A. (800)-992-4993



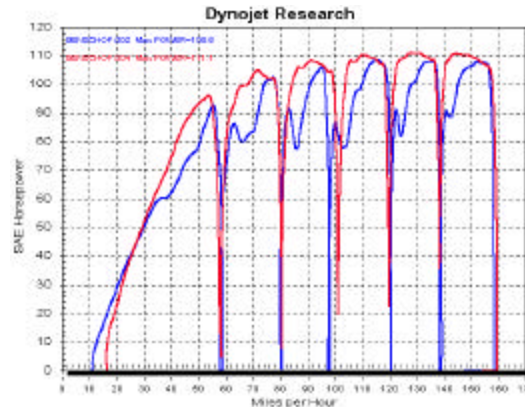
E1153.002

European Models Only

1993-98 Honda CBR1000

Stage 1

For mildly tuned machines using the stock air-box, with stock or K&N filter. May also be used with a good aftermarket exhaust system K&N filter #HA-1087



This graph shows a typical gain with a Dynojet jet kit.

WARNING

**NO SMOKING!
NO OPEN FLAME!
WHILE INSTALLING
YOUR DYNOJET KIT**

2191 Mendenhall Dr. Suite 105
North Las Vegas, NV 89031
TEL: 702-399-1423
FAX: 702-399-1431
8am-5pm Pacific Time
Monday through Friday

Website Address
<http://www.dynojet.com>

The manufacturer and seller make no warranties express or implied which extend beyond the description of the goods contained herein. Any description of this product is for the purpose of identifying it and shall not be deemed to create an express warranty.

Parts List

| | | |
|---|-------------------|--------|
| 4 | Main Jets | DJ120 |
| 4 | Main Jets | DJ124 |
| 4 | Fuel Needles | DNO110 |
| 4 | Adjusting Washers | DW0001 |
| 4 | E-Clips | DE0001 |
| 1 | Slide Drill | DD #44 |
| 4 | Slide Springs | DSP007 |

STAGE ONE INSTRUCTIONS

DYNOJET

E1153.002

1. Remove the vacuum slide from the carbs. Remove the spring from the slide. Thread one of the slide cover screws into the center of the needle retainer (Fig. A) and pull up gently. Remove the stock needles & spacers, noting order of assembly (Fig. B). Locate slide lift holes using Fig. B. With the slide drill (DD #44) supplied, enlarge your slide lift holes.

2. Install Dynojet needles on groove #2, using all stock spacers. Install the Dynojet washers above the E-clip. Install the stock spring retainers with the Dynojet springs.

3. Remove the stock main jets and replace with the Dynojet main jets provided. If you are running the stock exhaust use the DJ120 main jets, if you are running an aftermarket header or slip-on with high flowing baffle, use the DJ124 main jets. Be sure that the jets you are changing are the main jets.

4. Locate the fuel mixture screw (Fig. C). Carefully turn mixture screws clockwise until lightly seated, then turn back out 2 turns.

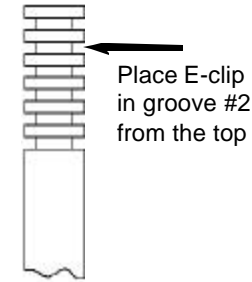


Fig. A

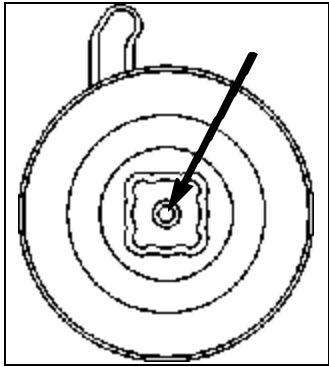


Fig. B

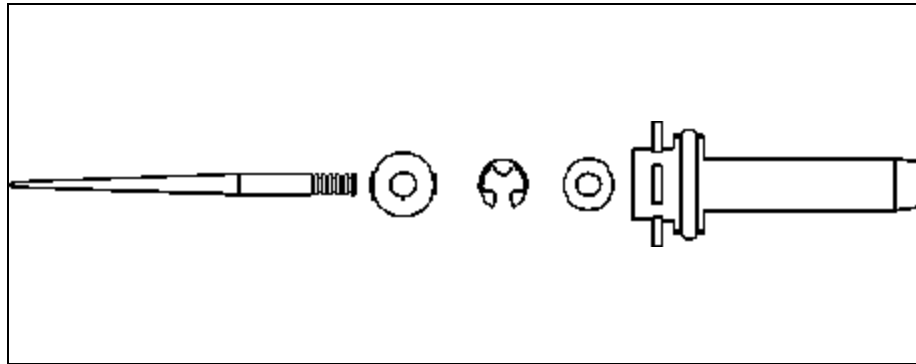


Fig. C

