

Thank you for purchasing this Dynojet kit. This kit has been developed for a motorcycle which is set to the parameters listed at the right in the "Stage" description. If your motorcycle does not meet any of these parameters please check with Dynojet before installation. For technical assistance contact your Dynojet distributor or call Dynojet U.S.A. (800)-992-4993

2191 Mendenhall Dr. Suite 105
 North Las Vegas, NV 89031
 TEL: 702-399-1423
 FAX: 702-399-1431
 8am-5pm Pacific Time
 Monday through Friday

Website Address
<http://www.dynojet.com>

The manufacturer and seller make no warranties express or implied which extend beyond the description of the goods contained herein. Any description of this product is for the purpose of identifying it and shall not be deemed to create an express warranty.

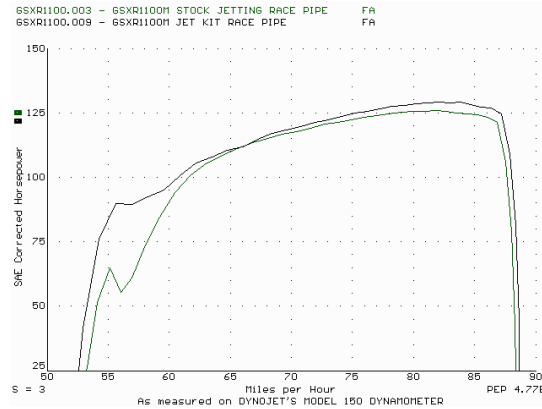


E3123.002
 European Models Only

1986-88 Suzuki GSXR1100

Stage 1

For mildly tuned machines using the stock air-box, with stock or K&N filter. May also be used with a good aftermarket exhaust system
 K&N Filter #SU-7586



This graph shows a typical gain with a Dynojet jet kit.

WARNING

**NO SMOKING!
 NO OPEN FLAME!
 WHILE INSTALLING
 YOUR JET KIT**

Parts List

4	Main Jets	DJ102
4	Main Jets	DJ106
4	Main Jets	DJ110
4	Fuel Needles	DNO331
4	Adjusting Washers	DW0001
4	E-clips	DE0001
4	Slide Springs	DSP007
1	Pilot Air Drill	DD #52

STAGE ONE INSTRUCTIONS

DYNOJET
E3123.002

1. Remove the vacuum slides from the carbs. Remove stock needles and spacers, noting order of assembly (Fig. A).
2. Install the Dynojet needles on groove #3. Use all stock spacers (Fig. A). Install the small Dynojet washers above the e-clip. Install the Dynojet slide springs (DSP007) in place of the stock slide springs. After installing the slides in the carbs be sure to check slide movement manually.
3. Remove the stock main jets and replace with the Dynojet main jets provided. If you are running the stock exhaust use the DJ102 main jets. If you are running an aftermarket header or slip-on with high flowing baffle use the DJ106 main jets. Be sure that the jets you are changing are the main jets.
4. Locate the fuel mixture screw (Fig. B). Carefully turn mixture screws clockwise until lightly seated, then back out 2 1/4 turns.

Fig. A

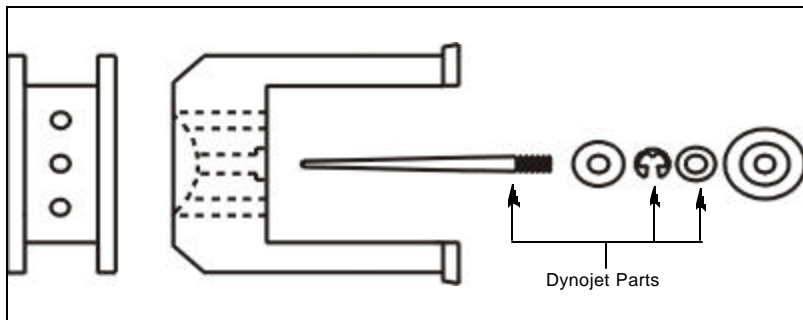


Fig. B

