

Thank you for purchasing this Dynojet kit. This kit has been developed for a motorcycle which is set to the parameters listed at the right in the "Stage" description. If your motorcycle does not meet any of these parameters please check with Dynojet before installation. For technical assistance contact your Dynojet distributor or call Dynojet U.S.A. (800)-992-4993



**E4189.001**

European Models Only

*2001-2004 BT1100 Bull Dog*

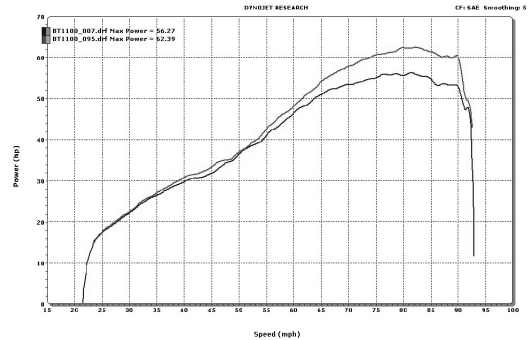
**Stage 1**

For mildly tuned machines using the stock air-box, with stock or K&N filter and the restrictors removed from the carb tops. May also be used with a good aftermarket exhaust system.

2191 Mendenhall Dr. Suite 105  
 North Las Vegas, NV 89031  
 TEL: 702-399-1423  
 FAX: 702-399-1431  
 8am-5pm Pacific Time  
 Monday through Friday

Website Address  
<http://www.dynojet.com>

The manufacturer and seller make no warranties express or implied which extend beyond the description of the goods contained herein. Any description of this product is for the purpose of identifying it and shall not be deemed to create an express warranty.



*This graph shows a typical gain with a Dynojet jet kit.*

# WARNING

**NO SMOKING!  
 NO OPEN FLAME!  
 WHILE INSTALLING  
 YOUR DYNOJET KIT**

<b>Parts List</b>		
2	Main Jets	DJ122
2	Main Jets	DJ124
2	Main Jets	DJ126
2	Main Jets	DJ128
2	Main Jets	DJ130
2	Fuel Needles	DNO761A
2	Needle Springs	DSP77
2	Adjusting Washers	DW0001
2	E-clips	DE0001

## STAGE ONE INSTRUCTIONS

1. Remove the vacuum slides from the carbs. Remove the stock needles and spacers, noting the order of assembly (Fig.A). Remove the restrictors from the carb tops.
2. Install the Dynojet needles on groove #2 from the top. Use all stock spacers (Fig. A). The small Dynojet washers are for half step increments and do not have to be installed at this time. **NOTE:** The needle springs (DSP77) do not have to be used, they are supplied in case the stock springs are misplaced. After installing the slides in carbs be sure to check slide movement manually before air box installation.
3. Install the Dynojet main jet provided. If you are running the stock exhaust use the DJ124 main jets. If you are running an aftermarket exhaust with high flowing baffle, use the DJ128 main jets. Be sure that the jets you are changing are the main jets.
4. Locate the fuel mixture screw (Fig. B). Carefully turn mixture screws clockwise until lightly seated, then back out 3-1/2 turns.

**Dynojet**

E4189.001

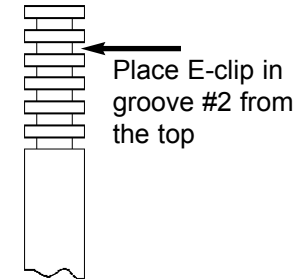


Fig. A

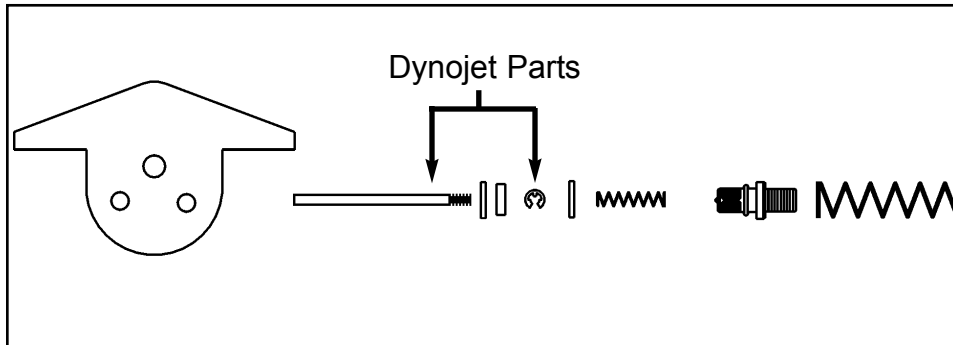


Fig. B

