

Thank you for purchasing this Dynojet kit. This kit has been developed for a motorcycle which is set to the parameters listed at the right in the "Stage" description. If your motorcycle does not meet any of these parameters please check with Dynojet before installation. For technical assistance contact your Dynojet distributor or call Dynojet U.S.A. (800)-992-4993

2191 Mendenhall Dr. Suite 105
 North Las Vegas, NV 89081
 TEL: 702-399-1423
 FAX: 702-399-1431
 8am-5pm Pacific Time
 Monday through Friday

Website Address
<http://www.dynojet.com>

The manufacturer and seller make no warranties express or implied which extend beyond the description of the goods contained herein. Any description of this product is for the purpose of identifying it and shall not be deemed to create an express warranty.



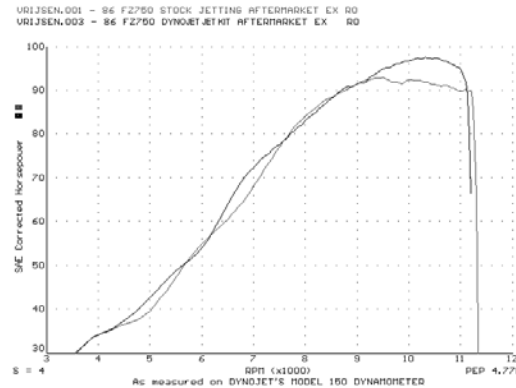
E4250.001

European Models Only

1989-97 Yamaha XTZ 750

Stage 2

For mildly tuned machines using the stock air-box, with the airbox lid remove and stock or K&N filter. May also be used with a good aftermarket exhaust system. K&N Filter# YA-0075



This graph shows a typical gain with a Dynojet jet kit.

WARNING

**NO SMOKING!
 NO OPEN FLAME!
 WHILE INSTALLING
 YOUR DYNOJET KIT**

| Parts List | | |
|-------------------|-------------------|---------|
| 2 | Main Jets | YJ155 |
| 2 | Main Jets | YJ160 |
| 4 | Main Jet O-Rings | YJ-0 |
| 2 | Fuel Needles | DNO322A |
| 2 | Slide Springs | DSP016 |
| 2 | E-clips | DE0001 |
| 2 | Adjusting Washers | DW0001 |
| 1 | Slide Drill | DD 5/32 |

STAGE TWO INSTRUCTIONS

Dynojet

E4250.001

1. Remove vacuum slide from carbs. Remove stock needles & spacers, noting order of assembly (Fig. A). Locate slide lift holes, with slide drill (DD#5/32) provided, enlarge your slide lift holes. Do **not** drill the needle hole.
2. Install the Dynojet needles on groove# 4, using all stock spacers (Fig. A). Install the Dynojet washer above the E-clip.
3. Remove stock main jets and replace with Dynojet mains provided. Use YJ155 main jets with stock exhaust pipe, or use YJ160 main jets with aftermarket header or slip-on with high flowing baffles. Be sure that the jets you are changing are the main jets.
4. Install the Dynojet spring in place of the stock spring, making sure the spring is aligned properly.
5. Locate the Fuel Mixture Plug (Fig. B). Carefully turn mixture screw clockwise until lightly seated, then back out 2-1/2 turns.

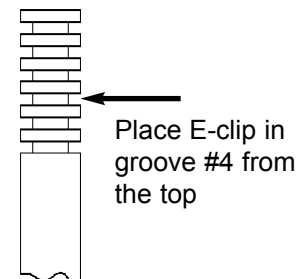


Fig. A

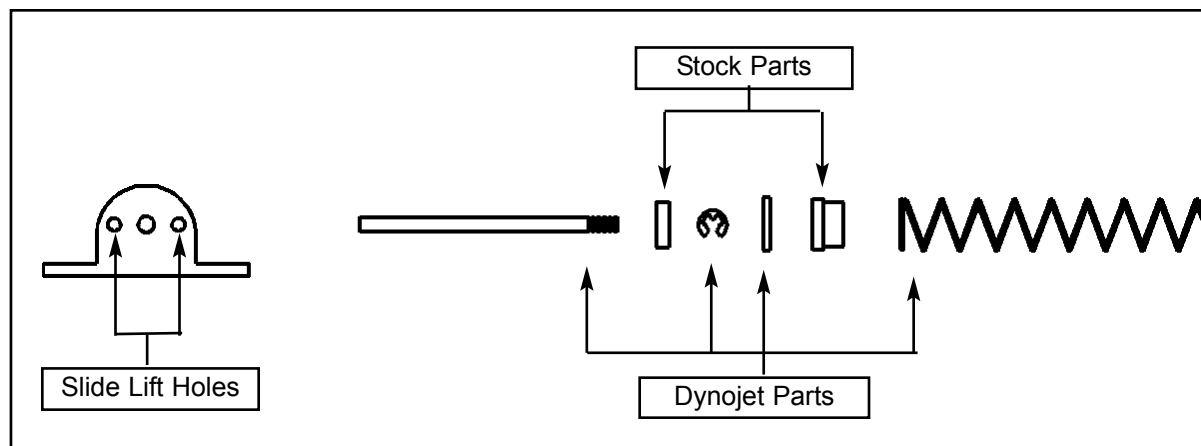


Fig. B

